

Leadership Duluth Class of 2002

The Duluth Area Chamber of Commerce proudly introduces the 2002 graduates and invites the community to call upon their talents for service as community leaders.



Beth Adams
Vice President of Student Services
Lake Superior College
733-5928



Christine Beckwith
Project Manager-Civil Engineer
Minnesota Department of Transportation
723-4960
ext. 3305



Pam Benson
Housing Operation Supervisor
Housing & Redevelopment Authority of Duluth
529-6300



John Beyer
Sergeant
City of Duluth - Police Department
725-0676



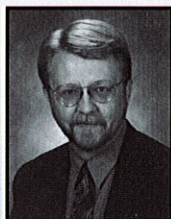
Denise Bussa,
Clinical Instructor
University of MN/ Duluth
726-6135
Sponsored by the Junior League of Duluth



Maisy Chan
Administrative Assistant
St. Louis County Social Services
726-2022



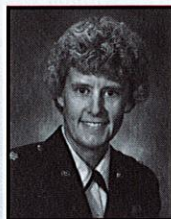
Marcia Hermann
Courtney Manager, Peds.
SMDC - Polinsky Rehab
786-5366



Doug Dalager
General Manager
Grandma's Saloon & Grill - Canal Park
727-4192



Tess Dandra
Business Retention & Resources
Duluth Area Chamber of Commerce
722-5501



Penny Dieryek
Logistics Squadron Commander
Minnesota Air National Guard
148th Fighter Wing
788-7527



Heidi Dulebohn,
President
HMLD, Inc.
391-2808
Sponsored by the Junior League of Duluth



Christopher Fleece
Manager, Engineering Services
Minnesota Power - An ALLETE Company
722-1972
ext. 3337



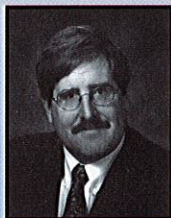
Peggy Hanson
Community Relations Administrator
Minnesota Power - An ALLETE Company
722-5642
ext. 3380



Betsy Jensen
General Manager
Holiday Inn Hotel & Suites
722-1202



Perry Larson
Credit Manager/ Business Banking
Wells Fargo Bank Minnesota
723-2720



Anthony Lockhart
Technology Director
Marshall School
727-7266



Donna Manns
Membership Coordinator
Wells Fargo Bank Minnesota
723-2686



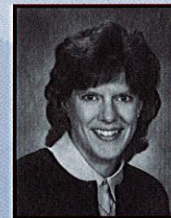
Michael Metso
City Engineer
City of Duluth - Public Works & Utilities
529-8250



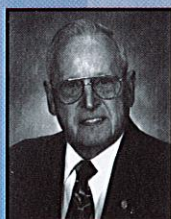
Marilyn Miller
General Ledger Analyst
Minnesota Power - An ALLETE Company
722-5642
ext. 3225



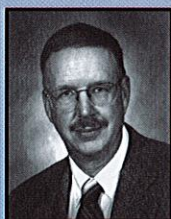
Mel Olson
Civil Engineer
Ayres Associates
722-7131
ext. 25



Barb Payette
Vice President
Stewart-Taylor Printing
722-4421



Bob Pearson
Accountant
Engwall Florist & Greenhouse
727-8961



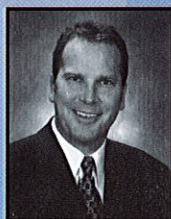
Ken Peterson
Aircraft Maintenance Supervisor
Minnesota Air National Guard - 148th Fighter Wing
788-7384



Carri Prudhomme
Physician & Provider Recruiter
SMDC/St. Mary's Duluth Clinic
786-3908



Susan Quam
CFO
LHB Engineers & Architects
727-8446



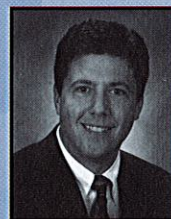
Thomas Reed
Associate
Andresen, Haag, Paciotti & Butterworth
722-1411



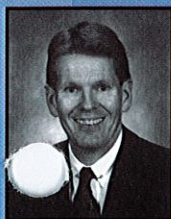
Kimberly Sannes
Project Manager
Minnesota Department of Transportation
723-4960



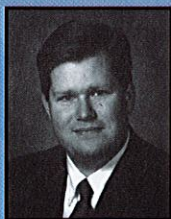
Len Sarvela, III
Realtor
Stone Gate Realty, Inc.
720-4766



Tim Smith
Tax Manager
RSM McGladrey, Inc.
727-8253



Kevin Snyder
Director of Human Resources
W.P.&R.S. Mars Co.
628-0303



Tom Stender
Account Executive
Otis-Magie Insurance Agency, Inc.
625-2120



Heather Story
Financial Coordinator
Northland Foundation
723-4040



Sondra Strom-Larson
Administrative Assistant - Property Manager
Johnson-Wilson Constructors, Inc.
628-0202



Jeanne Tongson
Custom Training Business Representative
Lake Superior College - Technology Center
733-7620



Michele Wallerstein
Business Unit Manager
Northwest Airlines Maintenance Base
733-5061
Sponsored by the Junior League of Duluth



Merry Wallin
Advertising Director
Duluth News Tribune
720-4138



Laura Zahn
728-5555