

Our community is full of opportunities.

CLASS OF 2004

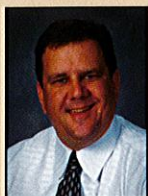
The Duluth Area Chamber of Commerce proudly introduces the 2004 graduates and invites the community to call upon their talents for service as community leaders.



Dawn Anderson
First American
Title Insurance
Company



Melinda Appold
Damberg, Scott,
Gerzina, Wagner
Architects



Doug Biggin
The Imaging Path



Jonathan
Birkeland
Republic Bank



Tom Bishop
Clear Channel
Radio Duluth



Errin Brungardt
Stora Enso Duluth



Andrea Buck
Duluth News
Tribune



Carmen Campbell
CellularOne



Andrea Cartier
Cartier Agency, Inc.



Carl Crawford
KBJR-TV UPN 9



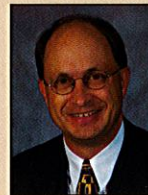
Rochelle Ferguson
Duluth
Entertainment
Convention Center



Debra Filteau
Hanft Fride,
A Professional
Association



Brian Hanson
Iron Range
Resources



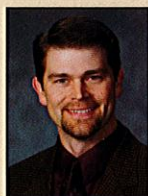
Peter Hedstrom
U S Bank



Kim Heger
Minnesota Power -
An ALLETE
Company



Carrie Hegstrom
The College
of St. Scholastica



John Hegstrom
Trammell Crow
Company



Tammy Heikkinen
Members
Cooperative
Credit Union



Catherine
Carter Huber
St. Luke's
Foundation



Ronda Hughes
Advanstar
Communications



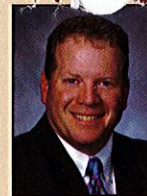
Julie Johnson
Duluth Convention
& Visitors Bureau



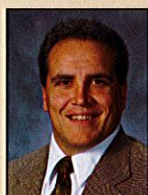
Kelly
Macken-Marble
St. Luke's



Amy Marline
Minnesota Power -
An ALLETE
Company



Steve Payette
Stewart -Taylor
Printing



David Pederson
Bernick's
Pepsi-Cola



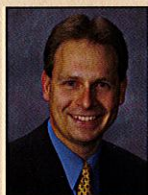
Melanie Persellin
Orman, Nord
& Spott



Cynthia Pohl
U S Bank



James Polinsky
Minnesuing Acres



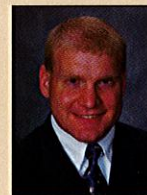
Michael Racette
Uniprise/
UnitedHealth Group



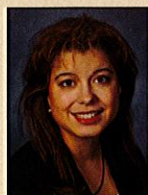
Paula Reed
United Way
of Greater Duluth



Jeff Reinarz
KDLH-TV
NewsChannel 3



Russ Salgy
Copeland
Community Center



Briana Schaub
Spirit Mountain
Recreation Area



Susan Stenerson
Lake Superior
College



Carol Valentini
Northland
Foundation



LuAnn Wasbotten
Old Chicago



Mary Youngstrand
Lake Superior
College